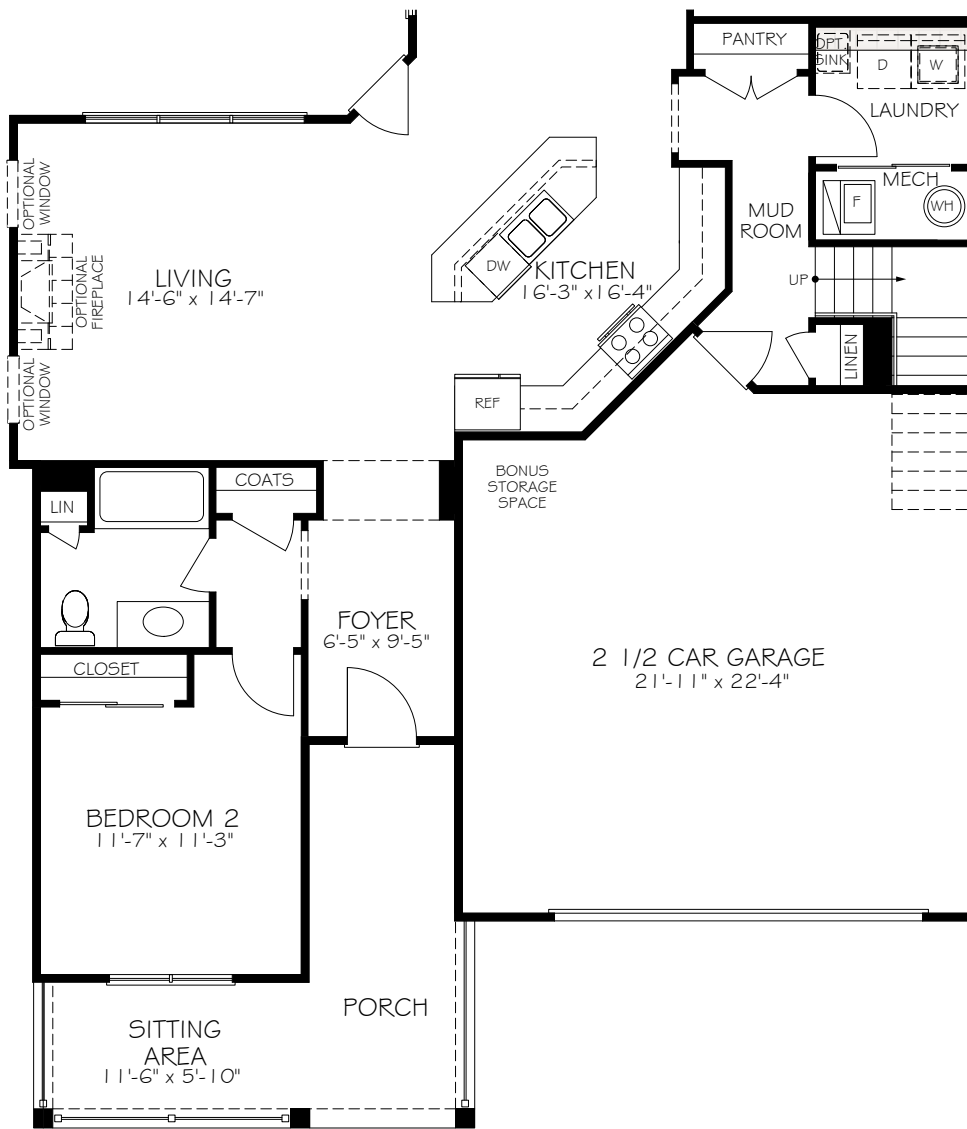
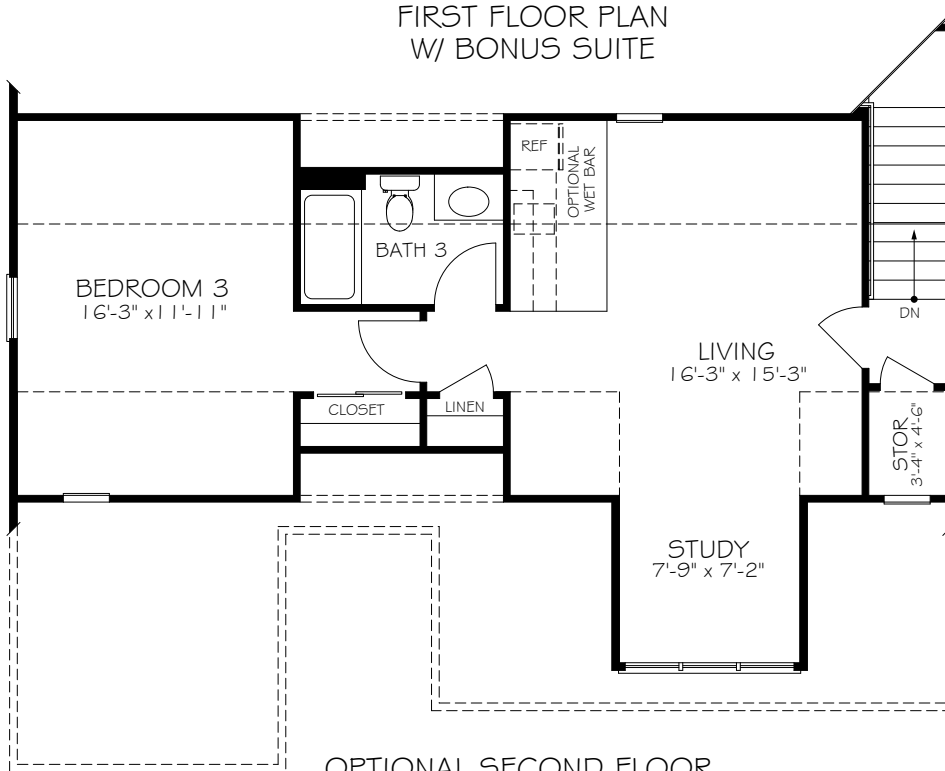


\*Optional courtyard features shown: Artificial turf, Landscaping, Trellis/Pergola, Plant walls (2), Water feature, and Stepping stone paths (Palazzo & Portico only)

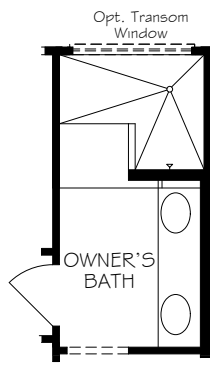


FIRST FLOOR PLAN  
W/ BONUS SUITE

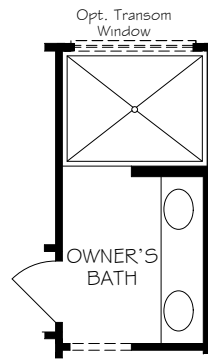


OPTIONAL SECOND FLOOR  
BONUS SUITE

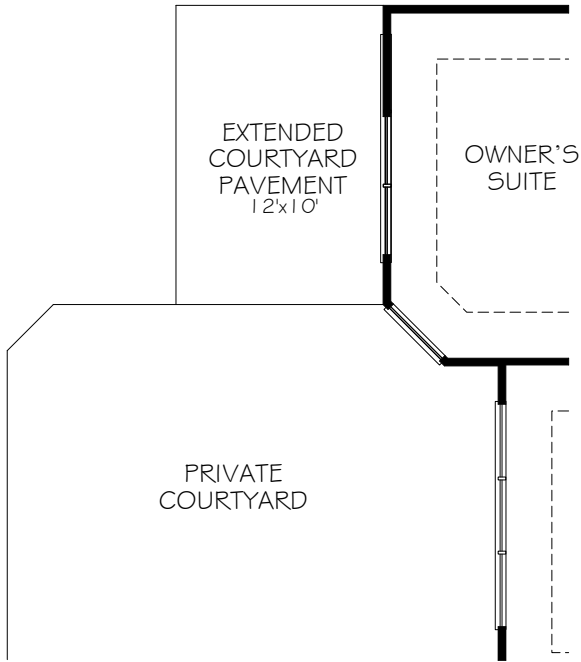
\*Note: Tray Ceilings on the First Floor with Bonus Suite option are in the following areas:  
Dining Room, Master Bedroom.



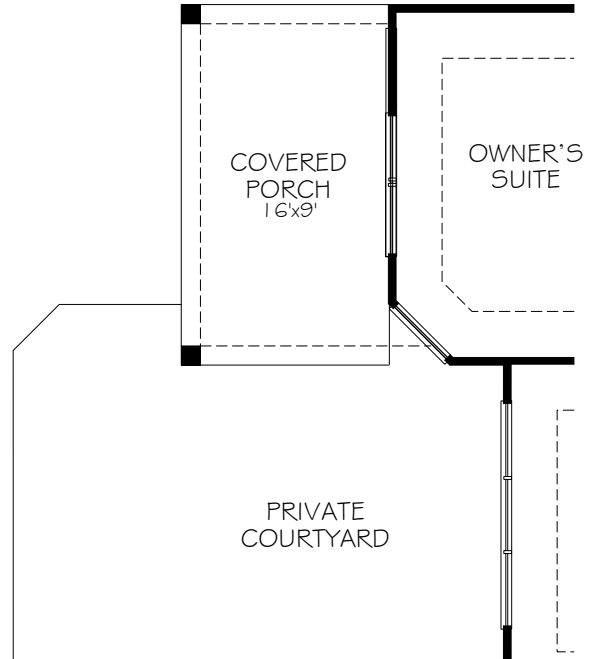
OPTIONAL L-SHAPED SHOWER LAYOUT WITH ZERO THRESHOLD



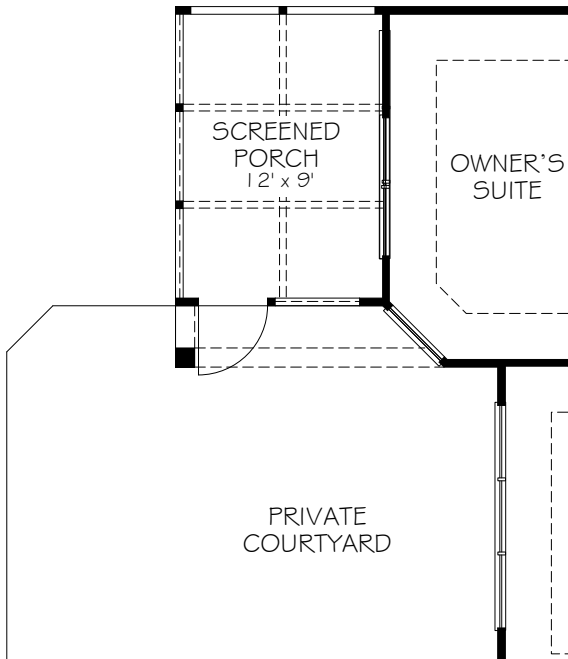
OPTIONAL UNIVERSAL SHOWER LAYOUT WITH ZERO THRESHOLD



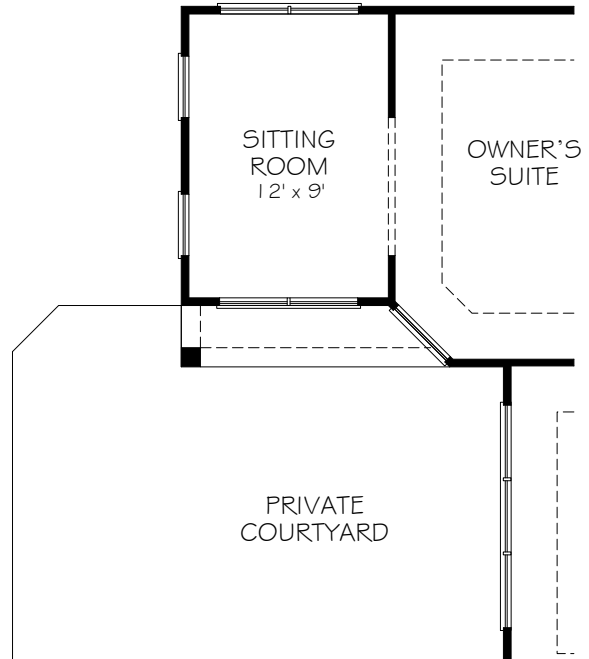
OPTIONAL EXTENDED COURTYARD PAVEMENT



OPTIONAL COVERED PORCH

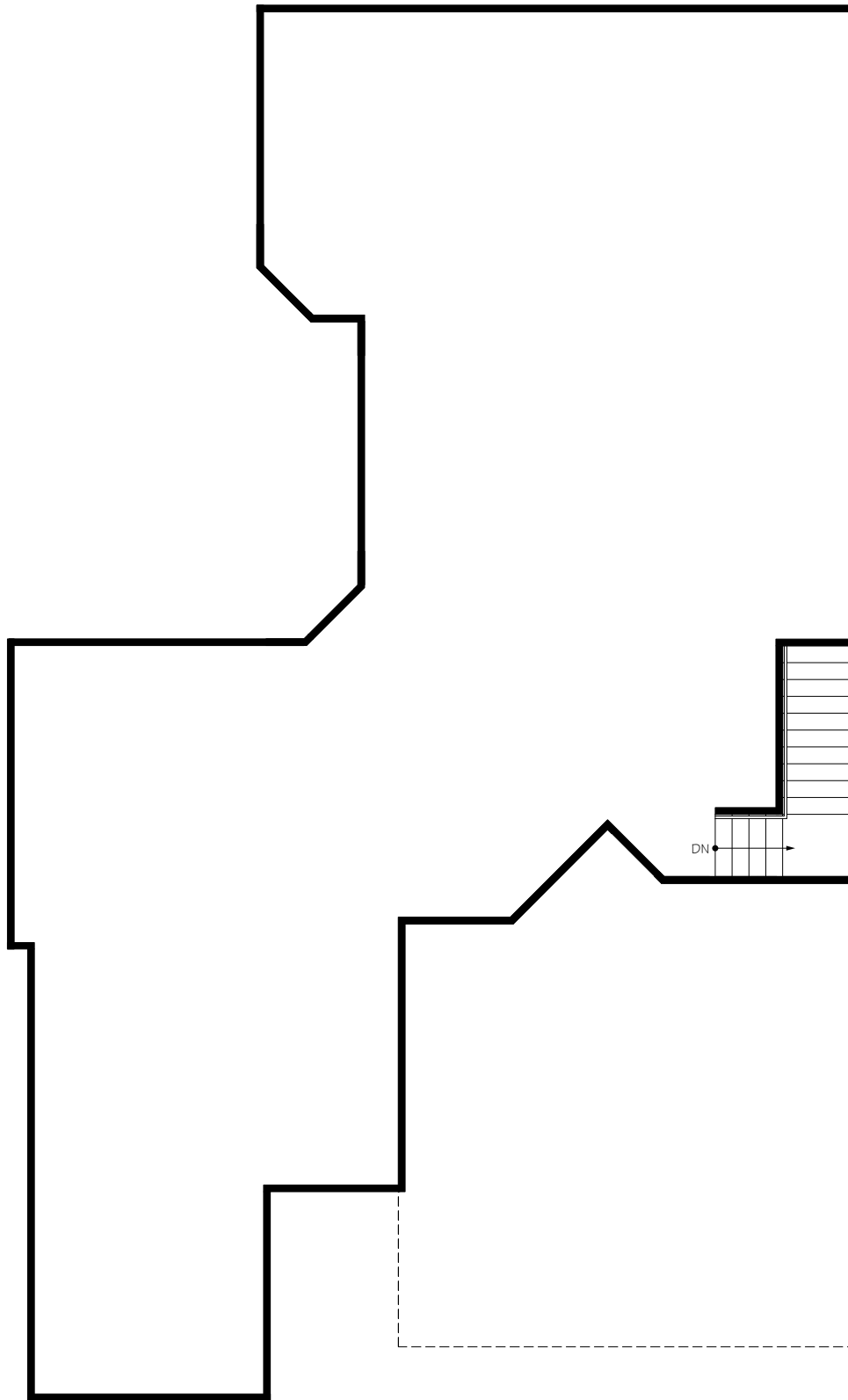


OPTIONAL SCREENED PORCH



OPTIONAL SITTING ROOM

\*Note: Zero threshold is not available with a basement home. There will be a threshold included.



CONSULT WITH YOUR LOCAL NEW HOMES  
SALES SPECIALIST TO DETERMINE IF  
BASEMENTS ARE AVAILABLE, AND THE  
CONFIGURATIONS THAT ARE OFFERED