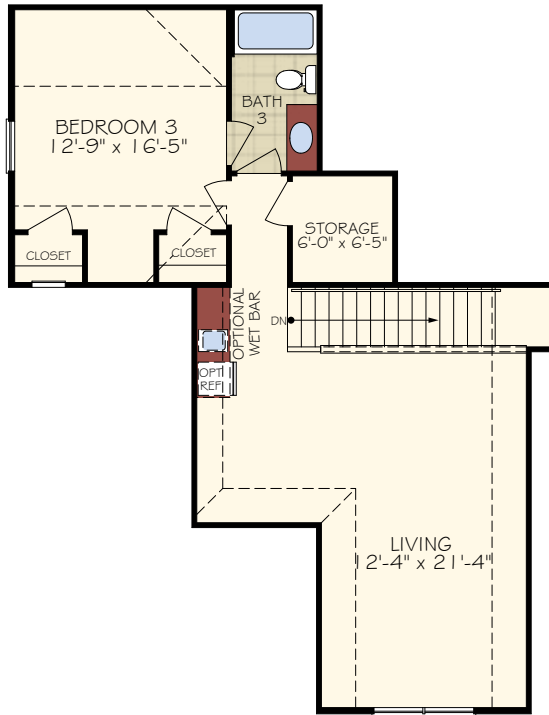


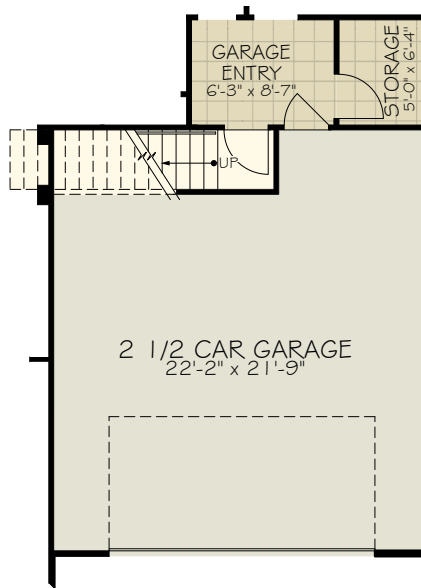
BASEMENT

CONSULT WITH YOUR LOCAL NEW
HOMES SALES SPECIALIST TO
DETERMINE IF BASEMENTS ARE
AVAILABLE, AND THE CONFIGURATIONS
THAT ARE OFFERED



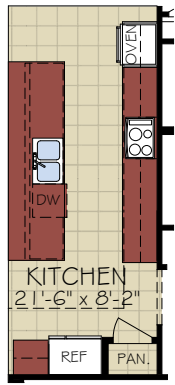


SECOND FLOOR PLAN

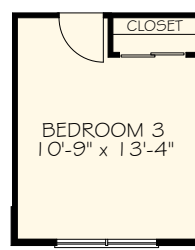


FIRST FLOOR PLAN WITH OPTIONAL BONUS SUITE

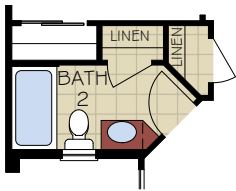
*Note: Tray Ceilings on the First Floor with Bonus Suite option are in the following are:
Living Room, Master Bedroom



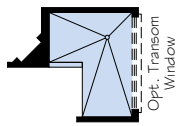
OPTIONAL
DELUXE KITCHEN



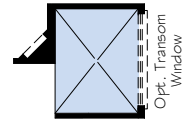
OPTIONAL
BEDROOM IN LIEU OF DEN



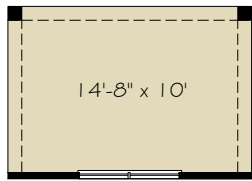
OPTIONAL
BATH 2 LINEN



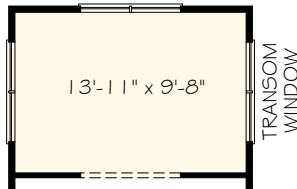
OPTIONAL L-SHAPED SHOWER LAYOUT
WITH ZERO THRESHOLD



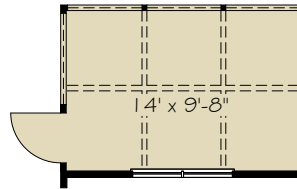
OPTIONAL UNIVERSAL SHOWER
LAYOUT WITH ZERO THRESHOLD



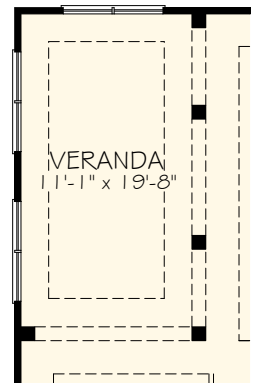
OPTIONAL
OWNER COVERED PORCH



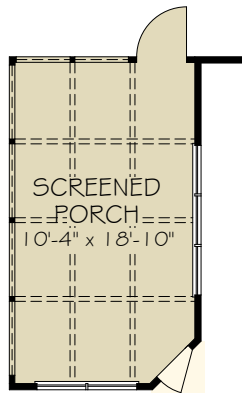
OPTIONAL
OWNER SITTING ROOM



OPTIONAL
OWNER SCREENED PORCH



OPTIONAL
LIVING VERANDA



OPTIONAL
LIVING SCREENED PORCH

*Note: Zero threshold is not available with a basement home. There will be a threshold included.