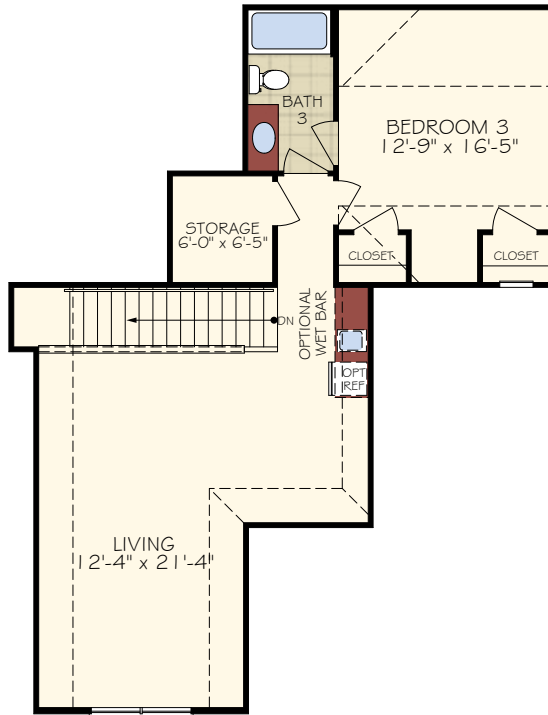


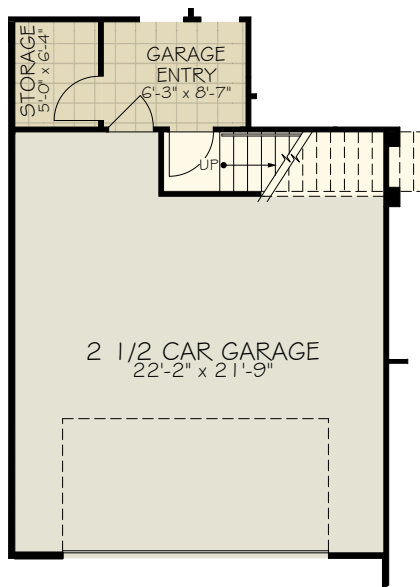
BASEMENT

CONSULT WITH YOUR LOCAL NEW  
HOMES SALES SPECIALIST TO  
DETERMINE IF BASEMENTS ARE  
AVAILABLE, AND THE CONFIGURATIONS  
THAT ARE OFFERED



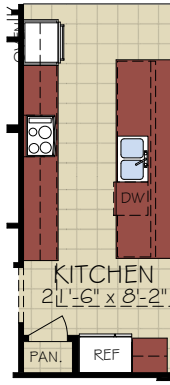


SECOND FLOOR PLAN

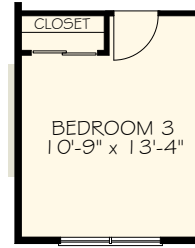


FIRST FLOOR PLAN WITH OPTIONAL BONUS SUITE

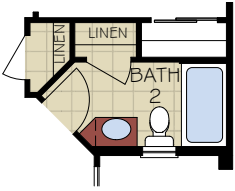
\*Note: Tray Ceilings on the First Floor with Bonus Suite option are in the following are:  
Living Room, Master Bedroom



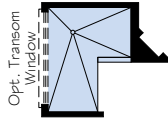
OPTIONAL  
DELUXE KITCHEN



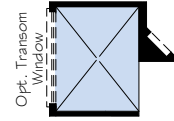
OPTIONAL  
BEDROOM IN LIEU OF DEN



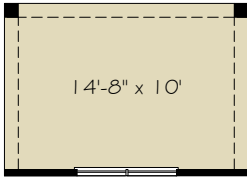
OPTIONAL  
BATH 2 LINEN



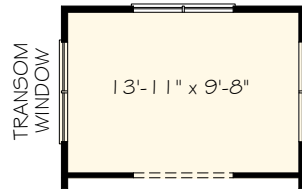
OPTIONAL L-SHAPED SHOWER LAYOUT  
WITH ZERO THRESHOLD



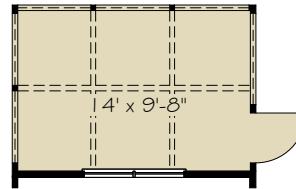
OPTIONAL UNIVERSAL SHOWER  
LAYOUT WITH ZERO THRESHOLD



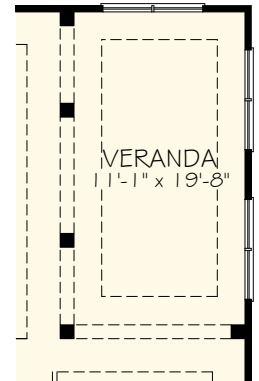
OPTIONAL  
OWNER COVERED PORCH



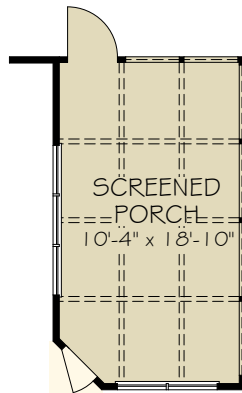
OPTIONAL  
OWNER SITTING ROOM



OPTIONAL  
OWNER SCREENED PORCH



OPTIONAL  
LIVING VERANDA



OPTIONAL  
LIVING SCREENED PORCH

\*Note: Zero threshold is not available with a basement home. There will be a threshold included.