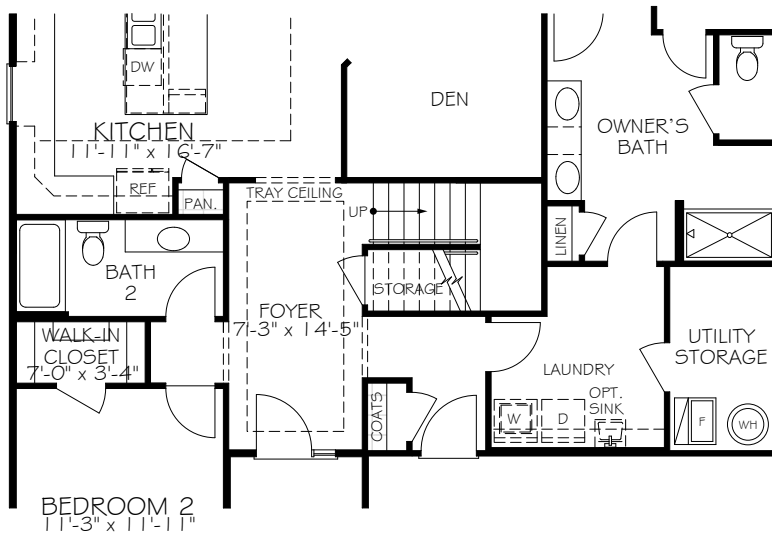
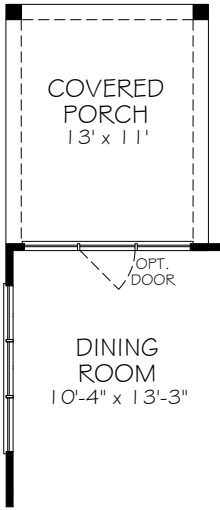


SECOND FLOOR PLAN

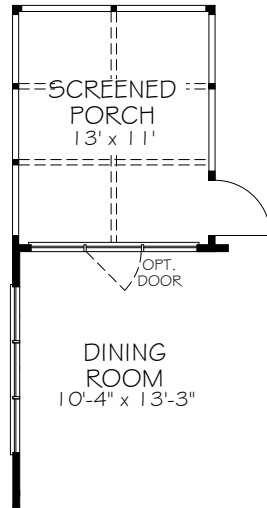


FIRST FLOOR PLAN WITH
OPTIONAL BONUS SUITE

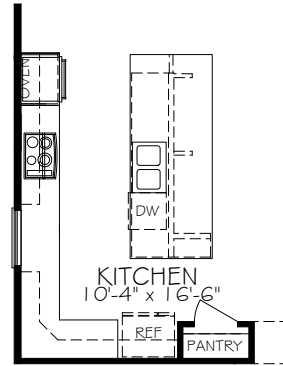
*Note: Tray Ceilings on the First Floor with Bonus Suite option are in the following areas:
Foyer, Dining / Living / Kitchen (One Large Tray), Master Bedroom.



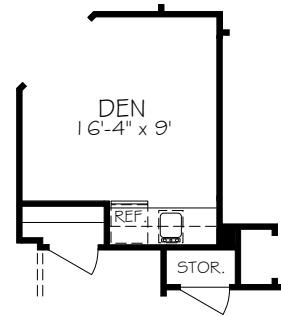
OPTIONAL COVERED PORCH



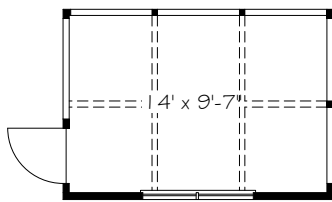
OPTIONAL LIVING SCREENED PORCH



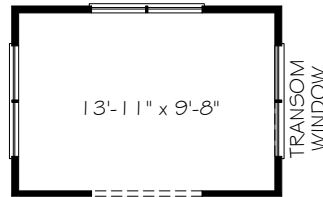
OPTIONAL DELUXE KITCHEN



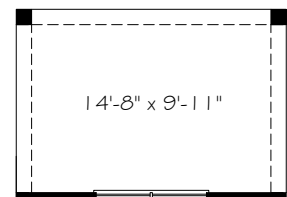
OPTIONAL DEN WET BAR



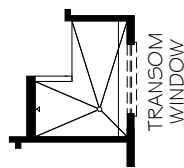
OPTIONAL OWNER SCREENED PORCH



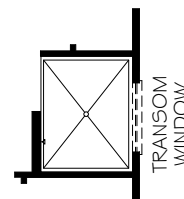
OPTIONAL OWNER SITTING ROOM



OPTIONAL OWNER COVERED PORCH

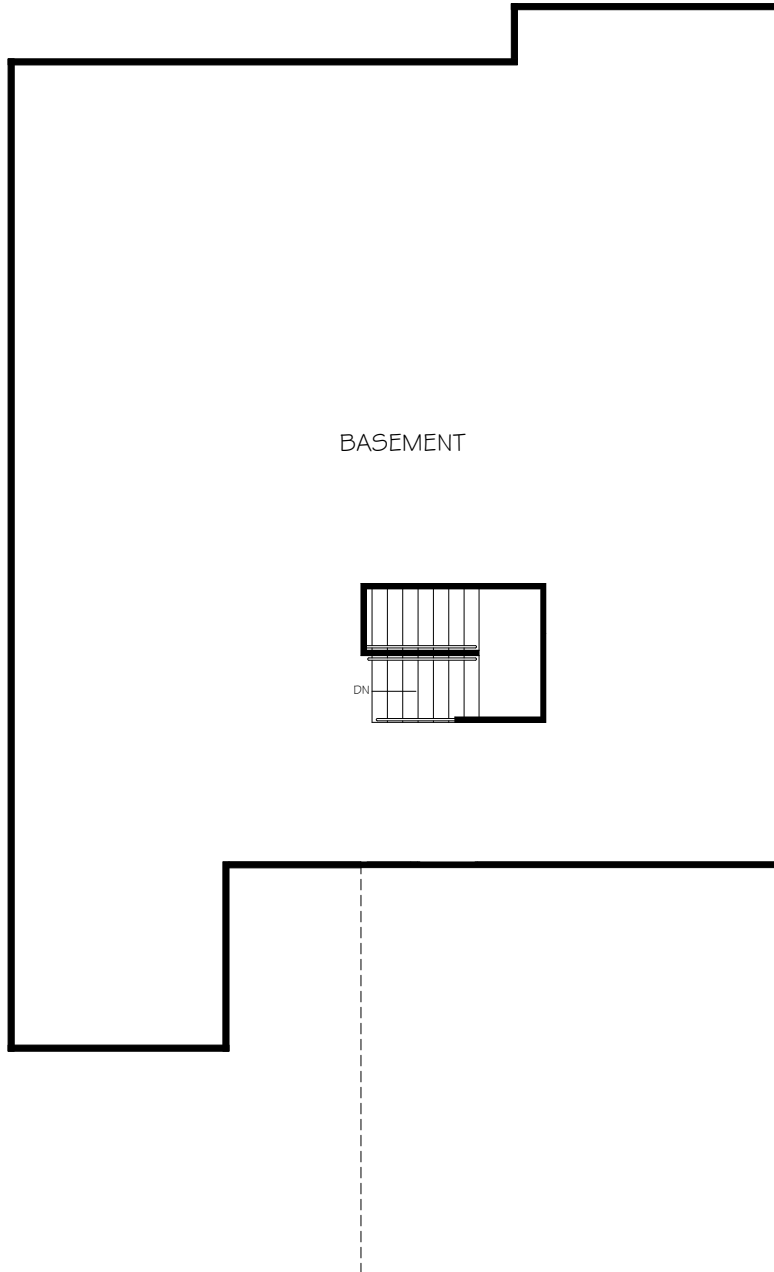


OPTIONAL L-SHAPED SHOWER LAYOUT WITH ZERO THRESHOLD

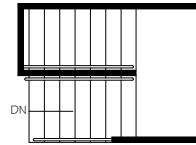


OPTIONAL UNIVERSAL SHOWER LAYOUT WITH ZERO THRESHOLD

*Note: Zero threshold is not available with a basement home. There will be a threshold included.



BASEMENT



CONSULT WITH YOUR LOCAL NEW
HOMES SALES SPECIALIST TO
DETERMINE IF BASEMENTS ARE
AVAILABLE, AND THE CONFIGURATIONS
THAT ARE OFFERED